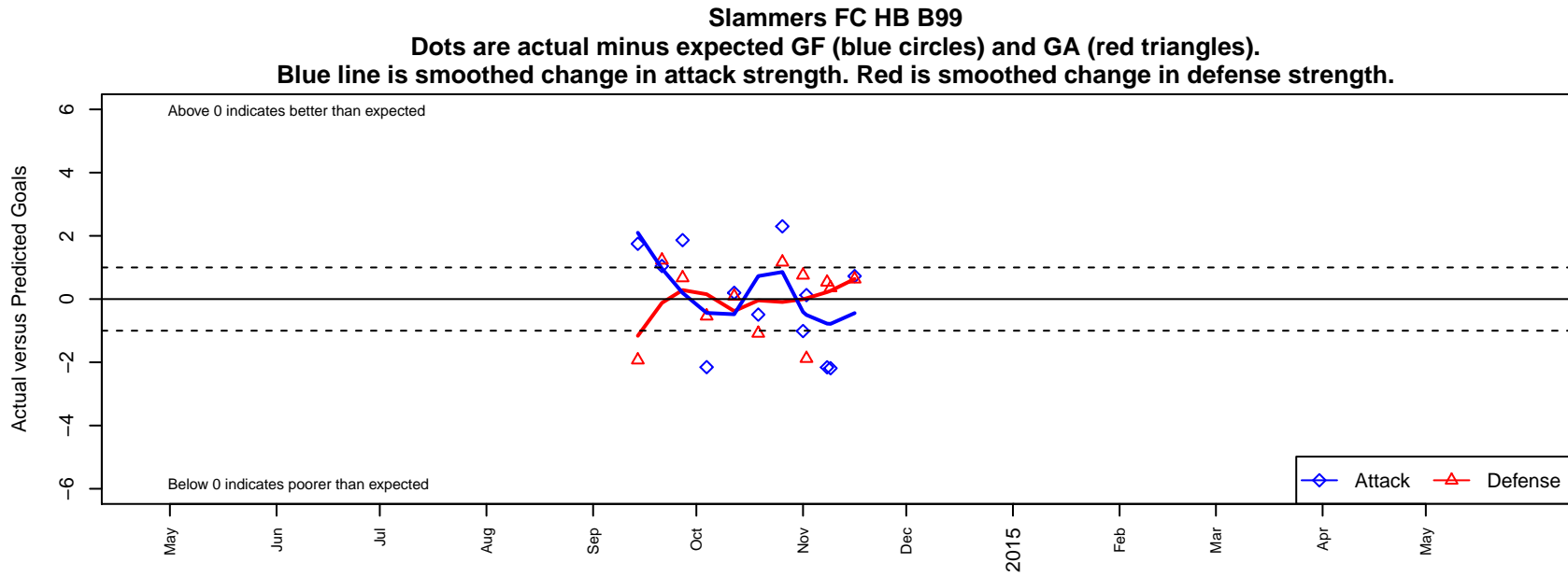


Slammers FC HB B99

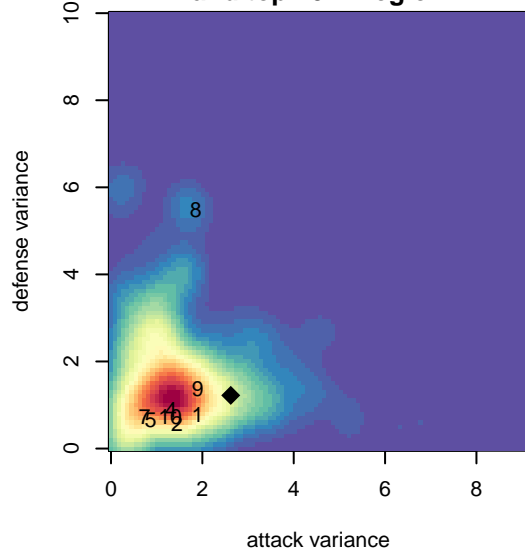
, CAS
B99 total strength=1604
attack=21.83 defense=12.05
fall league = SCDL FI1 U15
notes= Dominguez 2014

alt names used:
CDA Slammers FC – HB B99 Dominguez

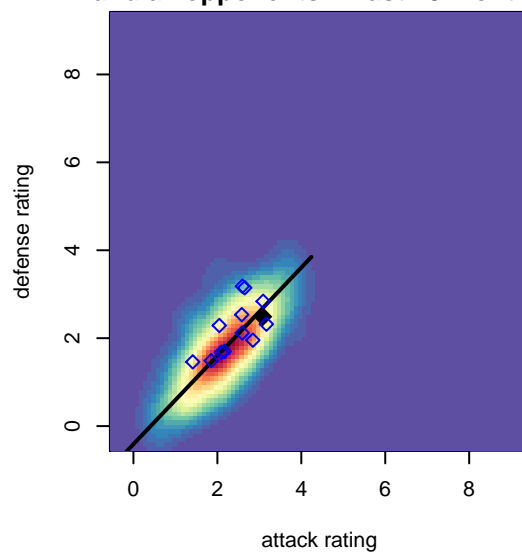
Venues played:
2014 SCDL FI1 U15



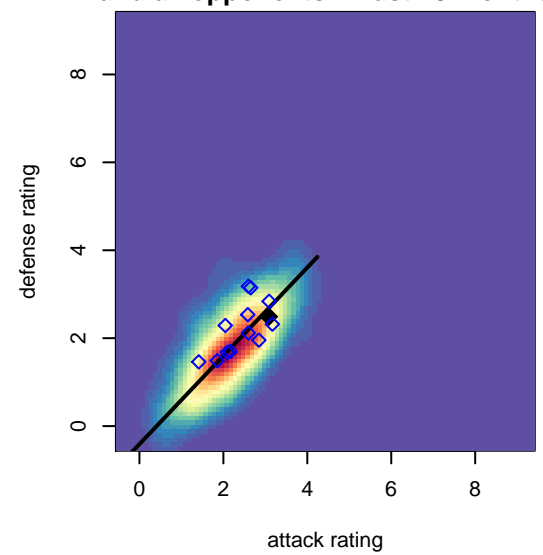
**attack and defense variance (black dot)
relative to other teams
and top 10 in region**



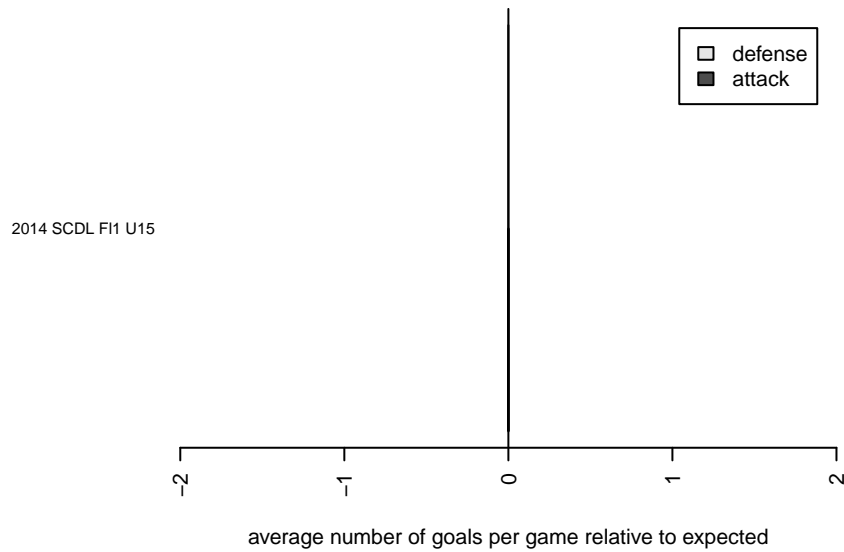
**attack and defense rating
relative to others at age
and all opponents in last 13 months**



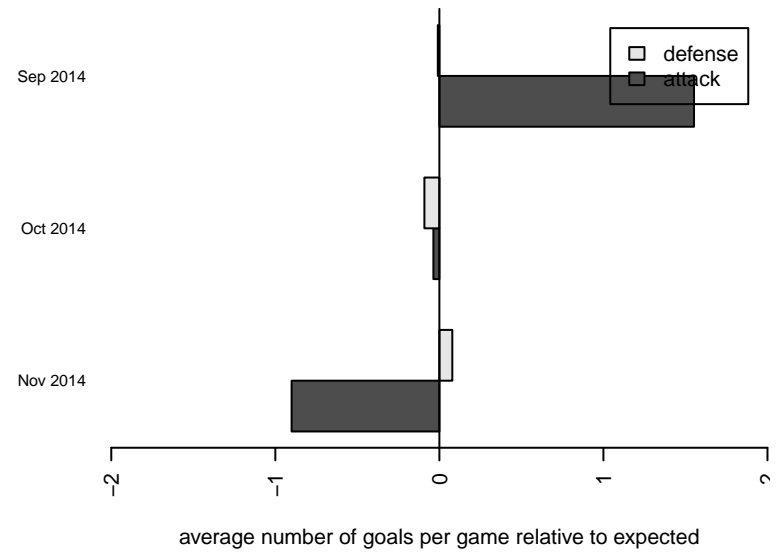
**attack and defense rating
relative to others at age
and all opponents in last 13 months**



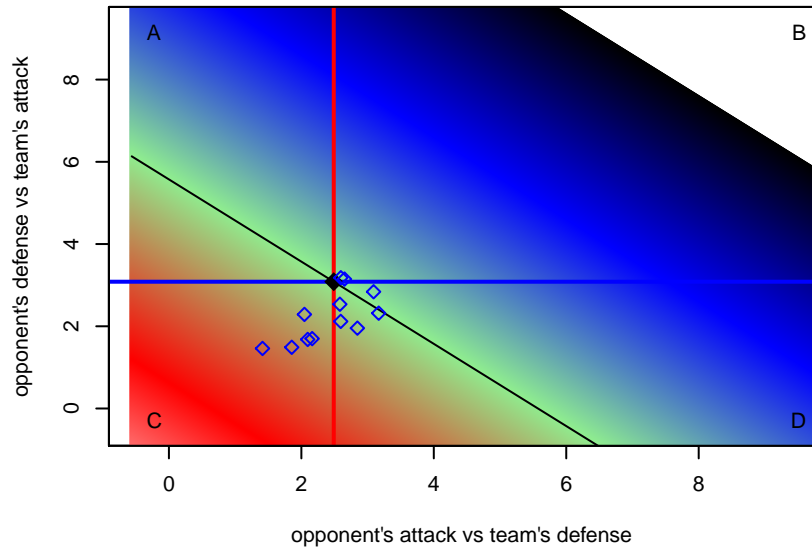
Performance relative to 13 month average



Performance relative to 13 month average



Distribution of opponents
 Red = Lose zone, Blue = Win zone, Green = Even
 Black line separates win/lose zones



lot. A=Neither has attack advantage, B=Opponent has both attack and defense advantage, C=Opponent has both attack and defense disadvantage, D=Both have

date	home		away		venue	pred.home	pred.away
2014-11-16	San Diego Surf SC Academy I B99	0	Slammers FC HB B99	3	2014 SCDL F11 U15	0.63	2.27
2014-11-09	Slammers FC HB B99	3	South Los Angeles United Academy B99	0	2014 SCDL F11 U15	5.19	0.35
2014-11-08	Pateadores CM B99	0	Slammers FC HB B99	3	2014 SCDL F11 U15	0.53	5.16
2014-11-02	Santa Clarita Valley Magic B99	3	Slammers FC HB B99	1	2014 SCDL F11 U15	1.12	0.87
2014-11-01	San Diego SC Academy Navy B99	0	Slammers FC HB B99	3	2014 SCDL F11 U15	0.75	4.01
2014-10-26	Slammers FC HB B99	5	TVSA Hawks Academy B99	0	2014 SCDL F11 U15	2.70	1.17
2014-10-19	CA Rush B99	3	Slammers FC HB B99	1	2014 SCDL F11 U15	1.92	1.49
2014-10-12	Slammers FC HB B99	2	FC Golden State Academy B99	1	2014 SCDL F11 U15	1.80	1.09
2014-10-04	Legends FC Yorba Linda B99	2	Slammers FC HB B99	1	2014 SCDL F11 U15	1.46	3.15
2014-09-27	Slammers FC HB B99	6	Pateadores IER B99	0	2014 SCDL F11 U15	4.14	0.67
2014-09-21	Sherman Oaks Extreme SC B99	0	Slammers FC HB B99	2	2014 SCDL F11 U15	1.23	0.95
2014-09-14	Slammers FC HB B99	4	Arsenal FC Academy B99	4	2014 SCDL F11 U15	2.25	2.07